

# The Relationship between Epicardial Adipose Tissue Thickness with Severity of Coronary Artery Disease in Indonesia

*by Ilhamjaya Patellongi*

---

**Submission date:** 25-Dec-2021 07:23PM (UTC+0700)

**Submission ID:** 1735602929

**File name:** 30\_The\_Relationship\_between\_Epicardial\_Adipose\_-2.pdf (298.14K)

**Word count:** 3230

**Character count:** 18793



**International Journal of Sciences:  
Basic and Applied Research  
(IJSBAR)**

**ISSN 2307-4531  
(Print & Online)**

<http://gssrr.org/index.php?journal=JournalOfBasicAndApplied>



## **The Relationship between Epicardial Adipose Tissue Thickness with Severity of Coronary Artery Disease in Indonesia**

Abdul Hakim Alkatiri<sup>a\*</sup>, Syakib Bakri<sup>b</sup>, Ilhamjaya Patellongi<sup>c</sup>, Mirnawati Mappiare<sup>d</sup>

<sup>a,d</sup>Department of Cardiology, Faculty of Medicine, Hasanuddin University, Makassar, Indonesia

<sup>b</sup>Department of Internal Medicine, Faculty of Medicine, Hasanuddin University, Makassar, Indonesia

<sup>c</sup>Department of Physiology, Faculty of Medicine, Hasanuddin University, Makassar, Indonesia

<sup>a</sup>Email: [ahalkatiri@hotmail.com](mailto:ahalkatiri@hotmail.com)

### **Abstract**

Epicardial adipose tissue (EAT), which is thought to be a component of visceral adiposity, is associated with the metabolic syndrome and considered as an indicator of cardiovascular risk. Correlation of EAT with coronary artery disease (CAD) in Indonesia is unknown. To address this issue, we examined the relationship between EAT thickness with severity of coronary lesion in Indonesian patients with CAD. Results revealed that one hundred and thirty one consecutive patients who underwent transthoracic echocardiography (TTE) and diagnostic coronary angiography were studied. The EAT thickness on the free wall of the right ventricle was measured at end-diastole from the parasternal long-axis views. Coronary angiograms were analyzed for severity of coronary artery disease using modified Gensini score. Accordingly, we classified the study population into two angiographic groups: patients with non-severe CAD (Gensini score  $\leq 13$ ) and patients with severe CAD (Gensini score  $> 13$ ). There were no significant differences between the groups with respect to anthropometric measurements, including body mass index and waist circumference ( $p=0.473$  and  $0.947$ , respectively).

\* Corresponding author.

The patients in severe CAD group had greater EAT thickness compared with non-severe CAD group (mean EAT thickness was  $8.5 \pm 2.4$  mm and  $6.1 \pm 2.5$  mm, respectively with  $p < 0.001$ ). EAT thickness of  $> 7.0$  mm had an 78.2 % sensitivity and an 71.7% specificity (ROC area of 0.800,  $p < 0.001$ , 95% CI [0.72-0.88] for predicting severe CAD. In conclusions EAT thickness was significantly correlated with the severity of CAD in Indonesian patients with stable CAD.

**Keywords:** epicardial adipose tissue; coronary artery disease; echocardiography; Indonesia.

## 1. Introduction

Cardiovascular disease (CVDs) is the number one cause of death globally; more people die annually from CVDs than from any other cause. An estimated 17.3 million people died from CVDs in 2008, representing 30% of all global death [1]. Of these deaths, an estimated 7.3 million were due to coronary artery disease (CAD) [2].

Inflammation plays an integral role in the pathogenesis of atherosclerotic CAD [3-5]. Therefore the interest in the EAT that is located between the myocardium and the pericardium surrounding both ventricles with variable extent and distribution patterns arouse [6-8]. Because of its endocrine and paracrine activity, secreting pro-inflammatory and anti-inflammatory cytokines and chemokines, it has been suggested to influence coronary atherosclerosis development [9-13].

TTE enables non-invasive assessment of EAT [14,15]. To date, the correlation of EAT with severity of CAD in Indonesia remains unknown. To address this issue, we examined the relationship between EAT thickness measured by transthoracic echocardiography with severity of CAD in Indonesian patients with stable CAD.

## 2. Materials and Methods

### 2.1 Study Design

The study was designed as an observational cross-sectional study. The study was approved by Hasanuddin University ethic committee and written informed consent was obtained from all participants.

### 2.2 Patients

We studied 131 consecutive patients who had undergone coronary angiography from July 2015 through March 2016 because of clinical diagnoses of stable CAD. The prospective study was performed in a single tertiary center. Patient with acute coronary syndrome, severe heart failure (New York Heart Association Class III-IV), poor echocardiographic images, severe valvular pathologic condition, and chronic kidney disease were excluded.

Patients were defined as hypertensive (JNC VII Guidelines), if they had a systolic pressure greater than 140 mmHg or a diastolic pressure greater than 90 mmHg, or if they were being treated with an antihypertensive medication. Patients were considered to have type II diabetes mellitus if they were previously diagnosed or

following the 2010 American Diabetes Association (ADA) diabetes diagnostic criteria, or if the patients were being treated with antidiabetic medication. Whereas dyslipidemia was defined from the NHLBI ATP III prevention guidelines, or the subjects were being treated with a lowering lipid medication.

### 2.3 Echocardiography

Transthoracic echocardiographic (TTE) examinations were performed using a Vivid 7® cardiac ultrasound system (GE Medical Systems; Horten, Norway) with a 2.5- to 3.5-MHz transducer with patients in the left lateral decubitus position. We measured EAT thickness on the free wall of right ventricle from the parasternal long-axis views. EAT was identified as an echo-free space in the pericardial layers on the 2-dimensional echocardiography, and its thickness was measured perpendicularly on the free wall of the right ventricle at end-diastole [15,16]. As illustrated in Figure 1. EAT thickness was measured at end-diastole from parasternal long- and short-axis B mode still-frame images by two echocardiographers who were blinded to coronary angiography data. Parasternal long- and short-axis measurements were averaged to obtain the mean thickness.

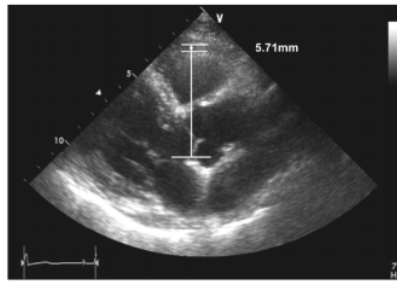
### 2.4 Coronary Angiography

Selective coronary angiography was applied to all patients with Judkins technique. Angiograms were recorded in multiple projections with a biplanar digital cardiac imaging system (Philips Integris DCI, Eindhoven, the Netherlands). Cine angiograms were evaluated by two experienced cardiologists. By examining all of the coronary angiograms, the localization and luminal stenosis rate of all coronary artery lesions were identified.

The severity of coronary artery lesions was scored using a modified Gensini score [17,18]. In brief, the coronary circulation was divided into eight proximal segments; the percentage by which each lesion in the proximal coronary circulation narrowed the artery was assessed according to the maximal narrowing of the diameter of the artery in all projections. The extent and severity of proximal coronary disease was assessed by assigning points to each lesion as follows: less than 50% of the luminal diameter, 1 point; 50% to 74% stenosis, 2 points; 75% to 99% stenosis, 3 points, and total obstruction, 4 points. The points of each lesion in the proximal coronary circulation were summed and a score for severity of coronary atherosclerosis was obtained. According to the modified Gensini score for classification of the degree of coronary stenosis [19]; the results of total scores can be separated into mild lesions (1-6 points), moderate lesions (7-13 points), and severe lesions (>13 points). Accordingly, we classified the study population into two angiographic groups: patients with non-severe CAD (Gensini score  $\leq 13$ ) and patients with severe CAD (Gensini score >13).

### 2.5 Statistical analyses

Continuous variables are expressed as means±standard deviation. Categorical variables were compared with the chi-square test. The Pearson correlation analysis was used to determine the relationship between mean values. The cut-off value of EAT thickness for predicting severe CAD with corresponding specificity and sensitivity was estimated by receiver operating characteristic (ROC) curve analysis. A *p* value of less than 0.05 was considered statistically significant. SPSS software (Statistical Package for the Social Sciences, version 21.0, SSPS Inc., Chicago, IL, USA) was used for all statistical calculations.



**Figure 1:** Example of measurement of epicardial adipose tissue thickness. Epicardial adipose tissue was identified as an echo-free space in the pericardial layers on the 2-dimensional echocardiography and its thickness was measured perpendicularly on the free wall of the right ventricle at end-diastole.

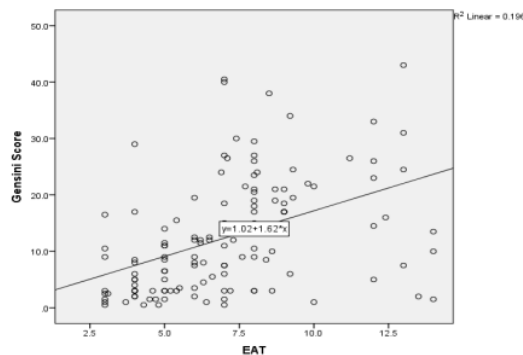
### 3. Results

#### 3.1 Demographic and Echocardiographic Characteristics of Study Population

There were 100 male and 31 female in the study population. The mean age was  $57.0 \pm 8.0$  years. The demographic and echocardiographic data of study groups are presented in Table 1. Patients with severe CAD were significantly more male smoker and had lower ejection fraction than were patients with non-severe CAD. Mean EAT thickness was  $6.1 \pm 2.5$  mm in the non-severe CAD group and  $8.5 \pm 2.4$  mm in the severe CAD group ( $p < 0.001$ ). There were no significant differences between the groups with respect to anthropometric measurements, including body mass index and waist circumference.

#### 3.2 Relationship between EAT Thickness with CAD Severity

Analysis of the relationship between EAT thickness with severity of CAD measured by Gensini score showed that a positive linear relationship for the entire subjects ( $R^2 = 19.6\%$ ; Figure 2). The thickness of EAT was increased in those with severe CAD in comparison to those with non-severe CAD (Figure 3).



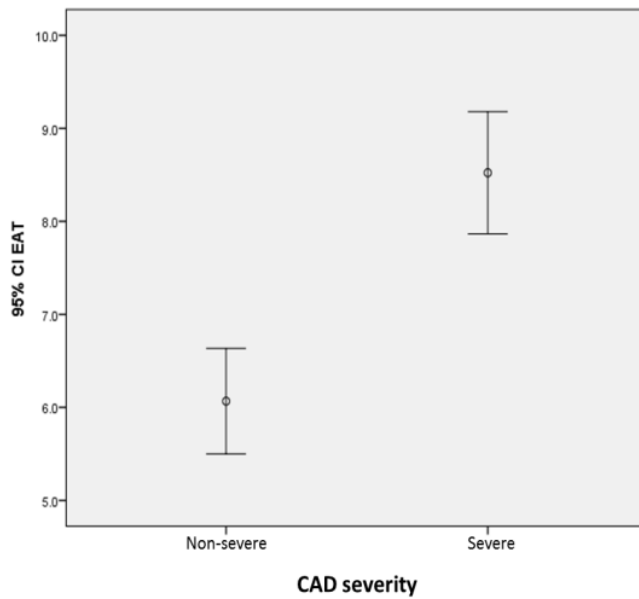
**Figure 2:** Scatter plot illustrating the relationship between epicardial adipose tissue thickness and Gensini score.

**Table 1:** Demographic and echocardiographic characteristics of subjects by study groups

Variable (n=131)	Non-severe CAD (n=78)	Severe CAD (n=53)	p value
<b>Demographic characteristics</b>			
Age (years)	55.9±7.9	57.9±7.3	0.137
Gender (male/female)	51/27	49/4	<0.001
BMI (kg/m <sup>2</sup> )	25.2±4.4	24.7±2.8	0.473
Waist circumference (cm)	91.3±13.2	91.5±11.9	0.947
Hypertension, n(%)	30 (53.6)	26 (46.4)	0.306
Smoker, n(%)	33 (49.3)	34 (50.7)	0.023
Diabetes mellitus, n(%)	13 (46.4)	15 (53.6)	0.168
Dyslipidemia, n(%)	73 (60.3)	48 (39.7)	0.375
Family history, n(%)	6 (54.5)	5 (45.5)	0.480
<b>Echocardiographic characteristics</b>			
Ejection fraction (%)	60.7±8.7	57.2±7.4	0.019
EAT thickness (mm)	6.1±2.5	8.5±2.4	<0.001

Values are presented as mean±standard deviation or number (%).

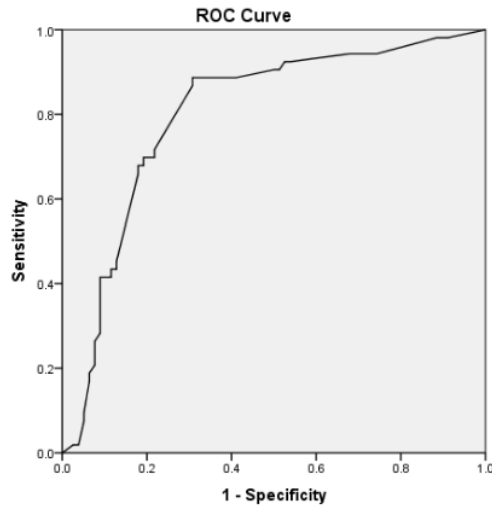
EAT, epicardial adipose tissue.



**Figure 3:** Box and whisker diagram illustrating the relationship between Epicardial adipose tissue thickness and severity of coronary artery disease.

### 3.3 EAT Thickness as Predictor of CAD Severity

EAT thickness of >7.0 mm had an 78.2 % sensitivity and an 71.7% specificity (ROC area of 0.800,  $p < 0.001$ , 95% CI [0.72-0.88] for predicting severe CAD); Figure 4, Table 2.



**Figure 4:** Receiver operating characteristic curve of the epicardial adipose tissue thickness in predicting severe coronary artery disease.

**Table 2:** Predictor of coronary artery disease severity by epicardial adipose tissue thickness

Predictor	Accuracy	Cutoff	Sensitivity	Specificity	PPV	NPV	<i>p</i>
EAT	80.0%	>7.0 mm	78.2%	71.7%	80.3%	69.1%	<0.001

PPV, positive predictive value; NPV, negative predictive value

### 4. Discussion

To the best of our knowledge, this is the first study to analyze the relationship between EAT thickness and CAD severity in Indonesia. This study shows an association between EAT thickness measured by TTE and the severity of CAD.

Until now, magnetic resonance imaging (MRI) has been accepted as a gold standard for measuring EAT thickness. In 2003, Iacobellis and his colleagues first reported the development of the echocardiographic measurement of EAT. They showed that echocardiographic EAT thickness has good correlation with MRI abdominal, epicardial fat measurements, anthropometric and metabolic parameters [15,16].

Our result showed that patients with severe CAD measured by Gensini score had thicker EAT compared with

patient with non-severe CAD. Two potential mechanisms for this association have been proposed. First, EAT is a component of visceral adiposity and is related to metabolic syndrome and cardiovascular risk factors. Secondly, it has paracrine and endocrine functions. Sacks and his colleagues pointed out the paracrine and vasocrine signaling effects of epicardial adipokines for the development of atherogenesis [14,16,20,21].

Furthermore, we found that there were no significant differences between the groups with respect to body mass index and waist circumference. This finding highlights the importance of visceral adiposity but not total adiposity with respect to cardiovascular risk. Thickness in EAT is also associated with metabolic syndrome [22], insulin resistance [23], endothelial dysfunction [24], and overt atherosclerotic CAD [25]. Clinical observations suggest that proximal portions of the coronary arteries are more deeply embedded in epicardial fat than are distal portions and are thus more susceptible to atherosclerosis. This has been attributed to the relative paucity of periaventricular adipose tissue, which is in continuity with the epicardial adipose tissue.

Epicardial adipose tissue produces miscellaneous proinflammatory and proatherogenic mediators, including interleukin-6, interleukin-1, tumor necrosis factor- $\alpha$ , monocyte chemoattractant protein-1, plasminogen activator inhibitor-1, angiotensinogen, leptin, resistin, and visfatin. On the other hand, adiponectin, which exerts an antiatherogenic effect via the improvement of endothelial function and the mitigation of inflammation, has been shown to be under expressed in the EAT of patients who have CAD [26-28].

Gökdeniz and associates analyzed relationship of EAT thickness to the CAD complexity in non-diabetic subjects. They found EAT thickness to be significantly correlated to SYNTAX score ( $r=0.629$ ;  $p<0.001$ ). They also determined a cutoff value of 5 mm EAT thickness for the prediction of an intermediate to high SYNTAX score (ROC area of 0.851, 95% CI [0.77-0.91] at a specificity of 92.2% and a sensitivity of 77.4%). However, those investigators studied non-diabetic patients only, whereas we analyzed the relationship of EAT thickness with CAD severity in a diabetic and non-diabetic population [29]. They analyzed the severity of CAD by SYNTAX score, whereas we used Gensini score.

## 5. Limitation

Our analysis was limited by the studied population because it included only those patients pre-selected to undergo coronary angiography. As non-invasive tools for the diagnosis of coronary artery disease have been developed, a population-based prospective study with a large number of patients can be performed. Therefore, an epidemiologic study is required to confirm these results. Serum levels of interleukins, cytokines, and adipokines, which could hint at the underlying mechanisms of atherosclerosis in CAD, were not evaluated

## 6. Conclusion

Our results could help identify severe CAD by transthoracic echocardiography-relatively inexpensive and readily available- before coronary angiography, thereby indicating whether early invasive coronary angiography and timely interventions should be performed especially in the setting where catheter lab resources are scant and waiting time for the examination is long.

## References

- [1] Global status report on noncommunicable disease 2010. Geneva, World Health Organization, 2011.
- [2] Global atlas on cardiovascular disease prevention and control. Geneva, World Health Organization, 2011.
- [3] Rutter MK, Meigs JB, Sullivan LM, et al. C-reactive protein, the metabolic syndrome, and prediction of cardiovascular events in the Framingham Offspring Study. *Circulation* 2004;110:380-5.
- [4] Nesto R. C-reactive protein, its role in inflammation, Type 2 diabetes and cardiovascular disease, and the effects of insulin-sensitizing treatment with thiazolidinediones. *Diabet Med* 2004;21:810-7.
- [5] Hansson GK. Inflammation, atherosclerosis, and coronary artery disease. *N Engl J Med* 2005;352:1685-95.
- [6] Sacks HS, Fain JN. Human epicardial adipose tissue: a review. *Am Heart J* 2007;153:907-17.
- [7] Shirani J, Berezowski K, Roberts WC. Quantitative measurement of normal and excessive (coradiposum) subepicardial adipose tissue, its clinical significance, and its effect on electrocardiographic QRS voltage. *Am J Cardiol* 1995;76:414-8.
- [8] Nelson AJ, Worthley MI, Psaltis PJ, et al. Validation of cardiovascular magnetic resonance assessment of pericardial adipose tissue volume. *J CardiovascMagnReson* 2009;11:15.
- [9] Wang TD, Lee WJ, Shih FY, et al. Association of epicardial adipose tissue with coronary atherosclerosis is region-specific and independent of conventional risk factors and intra-abdominal adiposity. *Atherosclerosis* 2010;213(1):279-87.
- [10] Bettencourt N, Toshcke AM, Leite D, et al. Epicardial adipose tissue is an independent predictor of coronary atherosclerotic burden. *Int J Cardiol* 2012;28:26-32.
- [11] Alexopoulos N, McLean DS, Janik M, et al. Epicardial adipose tissue and coronary artery plaque characteristics. *Atherosclerosis* 2010;210(1):150-4.
- [12] Oka T, Yamamoto H, Ohashi N, et al. Association between epicardial adipose tissue volume and characteristics of noncalcified plaques assessed by coronary computed tomographic angiography. *Int J Cardiol* 2012;161(1):45-9.
- [13] Eroglu S, Sade LE, Yildirim A, et al. Epicardial adipose tissue thickness by echocardiography is a marker for the presence and severity of coronary artery disease. *NutrMetabCardiovasc Dis* 2009;19(3):211-7.

- [14] Rexrode KM, Buring JE, Manson JE. Abdominal and total adiposity and risk of coronary heart disease in men. *IntJ ObesRelatMetabDisord* 2001;25:1047-56.
- [15] Iacobellis G, Assael F, Ribaldo MC, et al. Epicardial fat from echocardiography: a new method for visceral adipose tissue prediction. *Obes Res* 2003;11:304-10.
- [16] Iacobellis G, Ribaldo MC, Assael F, et al. Echocardiographic epicardial adipose tissue is related to anthropometric and clinical parameters of metabolic syndrome: a new indicator of cardiovascular risk. *J Clin Endocrinol Metab* 2003;88:5163e8.
- [17] Reardon MF, Nestel PK, Craig IH, et al. Lipoprotein predictors of the severity coronary artery disease in men and women. *Circulation* 1985;71:881-8.
- [18] Feng-lian MA, Xiao-lin LI, Jun LI, et al. Correlation of red cell distribution width with the severity of coronary artery disease: a large Chinese cohort study from a single centre. *Chin Med J* 2013;126(6):1053-7.
- [19] Sullivan DR, Marwick TH, Freedman SB. A new method of scoring coronary angiograms to reflect extent of coronary atherosclerosis and improve correlation with major risk factors. *Am Heart J* 1990;119:1262-7.
- [20] Peiris AN, Sothmann MS, Hoffmann RG, et al. Adiposity, fat distribution, and cardiovascular risk. *Ann Intern Med* 1989;110:867e72.
- [21] Folsom AR, Kushi LH, Anderson KE, et al. Associations of general and abdominal obesity with multiple health outcomes in older women: the Iowa Women's Health Study. *Arch Intern Med* 2000;160:2117e28.
- [22] Pierdomenico SD, Pierdomenico AM, Cuccurullo F, et al. Meta-analysis of the relation of echocardiographic epicardial adipose tissue thickness and the metabolic syndrome. *Am J Cardiol* 2013;111(1):73-8.
- [23] Wang CP, Hsu HL, Hung WC, et al. Increased epicardial adipose tissue (EAT) volume in type 2 diabetes mellitus and association with metabolic syndrome and severity of coronary atherosclerosis. *ClinEndocrinol (Oxf)* 2009;70(6):876-82.
- [24] Kocaman SA, Durakoglugil ME, Cetin M, et al. The independent relationship of epicardial adipose tissue with carotid intima-media thickness and endothelial functions: the association of pulse wave velocity with the active facilitated arterial conduction concept. *Blood PressMonit* 2013;18(2):85-93.
- [25] Doesch C, Haghi D, Suselbeck T, et al. Impact of functional, morphological and clinical parameters on epicardial adipose tissue in patients with coronary artery disease. *Circ J* 2012;76(10):2426-34.

- [26] Sengul C, Ozveren O. Epicardial adipose tissue: a review of physiology, pathophysiology, and clinical applications. *AnadoluKardiyolDerg* 2013;13(3):261-5.
- [27] Spiroglou SG, Kostopoulos CG, Varakis JN, et al. Adipokines in periaortic and epicardial adipose tissue: differential expression and relation to atherosclerosis. *J AtherosclerThromb* 2010;17(2):115-30.
- [28] Eiras S, Teijeira-Fernandez E, Shamagian LG, et al. Extension of coronary artery disease is associated with increased IL-6 and decreased adiponectin gene expression in epicardial adipose tissue. *Cytokine* 2008;43(2):174-80.
- [29] Gokdeniz T, Turan T, Aykan AC, et al. Relation of epicardial fat thickness and cardio-ankle vascular index to complexity of coronary artery disease in nondiabetic patients. *Cardiology* 2013;124(1):41-8.

# The Relationship between Epicardial Adipose Tissue Thickness with Severity of Coronary Artery Disease in Indonesia

## ORIGINALITY REPORT

<b>31</b> %	<b>26</b> %	<b>26</b> %	<b>7</b> %
SIMILARITY INDEX	INTERNET SOURCES	PUBLICATIONS	STUDENT PAPERS

## PRIMARY SOURCES

<b>1</b>	<a href="http://www.dovepress.com">www.dovepress.com</a> Internet Source	<b>3</b> %
<b>2</b>	Submitted to Glasgow Caledonian University Student Paper	<b>2</b> %
<b>3</b>	<a href="http://www.cpn.or.kr">www.cpn.or.kr</a> Internet Source	<b>2</b> %
<b>4</b>	<a href="http://www.jcrpe.org">www.jcrpe.org</a> Internet Source	<b>1</b> %
<b>5</b>	Yun, Kyeong Ho, Myung Ho Jeong, Seok Kyu Oh, Eun Mi Park, Yun Kyung Kim, Sang Jae Rhee, Eun Mi Lee, Nam Jin Yoo, Nam-Ho Kim, Young Keun, and Jin-Won Jeong. "Clinical Significance of Aortic Knob Width and Calcification in Unstable Angina", Circulation Journal, 2006. Publication	<b>1</b> %
<b>6</b>	<a href="http://www.deepdyve.com">www.deepdyve.com</a> Internet Source	<b>1</b> %

[www.nejm.org](http://www.nejm.org)

7	Internet Source	1 %
8	core.ac.uk Internet Source	1 %
9	www.kup.at Internet Source	1 %
10	www.omicsonline.org Internet Source	1 %
11	paper.researchbib.com Internet Source	1 %
12	pdgfrinhibitors.com Internet Source	1 %
13	mgend.med.kyoto-u.ac.jp Internet Source	1 %
14	Sudhakar Reddy Pathakota, Rajasekhar Durgaprasad, Vanajakshamma Velam, Lakshmi AY, Latheef Kasala. "Correlation of coronary artery calcium score and carotid artery intima-media thickness with severity of coronary artery disease", Journal of Cardiovascular and Thoracic Research, 2020 Publication	1 %
15	Submitted to University of Wisconsin, Green Bay Student Paper	1 %

16	Otsuka, F.. "Plasma Adiponectin Levels Are Associated With Coronary Lesion Complexity in Men With Coronary Artery Disease", Journal of the American College of Cardiology, 20060919 Publication	1 %
17	lipidworld.biomedcentral.com Internet Source	1 %
18	www.tandfonline.com Internet Source	1 %
19	repo.ur.krakow.pl Internet Source	1 %
20	www.nsnjournal.org Internet Source	1 %
21	Submitted to Ryerson University Student Paper	1 %
22	Serdar Sevimli. "Right Ventricular Strain and Strain Rate Properties in Patients with Right Ventricular Myocardial Infarction", Echocardiography, 8/2007 Publication	1 %
23	www.spandidos-publications.com Internet Source	1 %
24	Zachary Merrill, April Chambers, Rakié Cham. "Development and validation of body fat	1 %

prediction models in American adults",  
Obesity Science & Practice, 2020

Publication

25

[www.hindawi.com](http://www.hindawi.com)

Internet Source

1 %

26

Işil İrem Budakoğlu, Cihangir Özcan, Derya Eroğlu, Filiz Yanık. "Quality of life and postmenopausal symptoms among women in a rural district of the capital city of Turkey",  
Gynecological Endocrinology, 2009

Publication

<1 %

27

[res.mdpi.com](http://res.mdpi.com)

Internet Source

<1 %

28

[www.science.gov](http://www.science.gov)

Internet Source

<1 %

29

[www.tuberktoraks.org](http://www.tuberktoraks.org)

Internet Source

<1 %

30

[247000.ru](http://247000.ru)

Internet Source

<1 %

31

Aykan, Ahmet Çağrı, İlker Gül, Tayyar Gökdeniz, Engin Hatem, Ahmet Oğuz Arslan, Ezgi Kalaycıoğlu, Turhan Turan, Erdal Belen, and Mustafa Çetin. "Ankle Brachial Index Intensifies the Diagnostic Accuracy of Epicardial Fat Thickness for the Prediction of

<1 %

## Coronary Artery Disease Complexity", Heart Lung and Circulation, 2014.

Publication

---

32

Lee, Hae-Young, Jean-Pierre Després, and Kwang Kon Koh. "Perivascular adipose tissue in the pathogenesis of cardiovascular disease", Atherosclerosis, 2013.

Publication

---

<1 %

33

W-T Lai. "Adipocytokines and proinflammatory mediators from abdominal and epicardial adipose tissue in patients with coronary artery disease", International Journal of Obesity, 02/2008

Publication

---

<1 %

34

[www.e-cep.org](http://www.e-cep.org)

Internet Source

---

<1 %

35

Gorter, P.M.. "Quantification of epicardial and peri-coronary fat using cardiac computed tomography; reproducibility and relation with obesity and metabolic syndrome in patients suspected of coronary artery disease", Atherosclerosis, 200804

Publication

---

<1 %

36

Remzi Yilmaz. "The Association of QT Dispersion and QT Dispersion Ratio with Extent and Severity of Coronary Artery Disease", Annals of Noninvasive Electrocardiology, 1/2006

<1 %

37 T.-H. Lin, H.-M. Su, C.-L. Wang, W.-C. Voon, S.-J. Shin, W.-T. Lai, S.-H. Sheu. "Vascular Endothelial Growth Factor Polymorphisms and Extent of Coronary Atherosclerosis in Chinese Population With Advanced Coronary Artery Disease", American Journal of Hypertension, 2010  
Publication

---

38 [espace.library.uq.edu.au](http://espace.library.uq.edu.au)  
Internet Source

---

39 [www.asecho.org](http://www.asecho.org)  
Internet Source

---

40 [www.avicennajmed.com](http://www.avicennajmed.com)  
Internet Source

---

41 [www.bispebjerghospital.dk](http://www.bispebjerghospital.dk)  
Internet Source

---

42 [www.revespcardiol.org](http://www.revespcardiol.org)  
Internet Source

---

43 ALAN, Bircan, AKTAN, Adem and DUSAK, Abdurrahim. "Role of Renal Resistive Index in Predicting the Severity of Coronary Artery Disease in Patients with Mild to Moderate Renal Insufficiency", Yıldırım Beyazıt Üniversitesi, 2016.  
Publication

---

---

Exclude quotes      On

Exclude matches      < 5 words

Exclude bibliography      On